

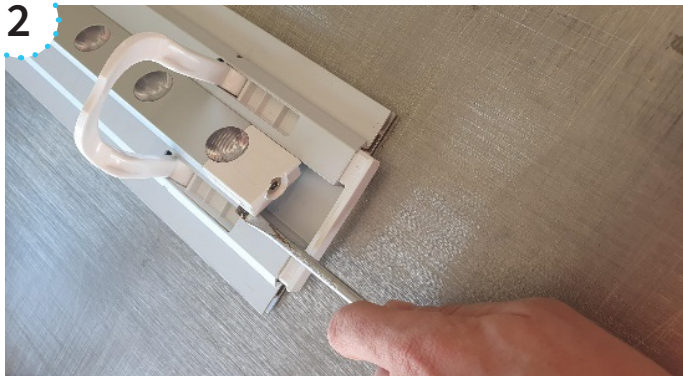
HOW TO REPLACE THE LED MODULE, BRIDGE HANDLE AND SLIDE BLOCK

1



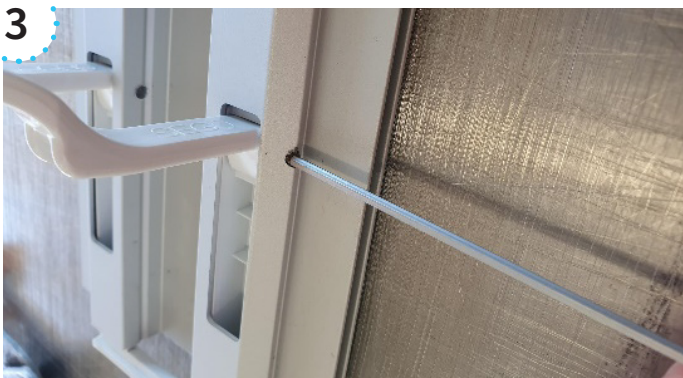
Push a flat screwdriver under the LED strip.

2



Push the LED strip up with the screwdriver. It will snap out of place so you can remove it.

3



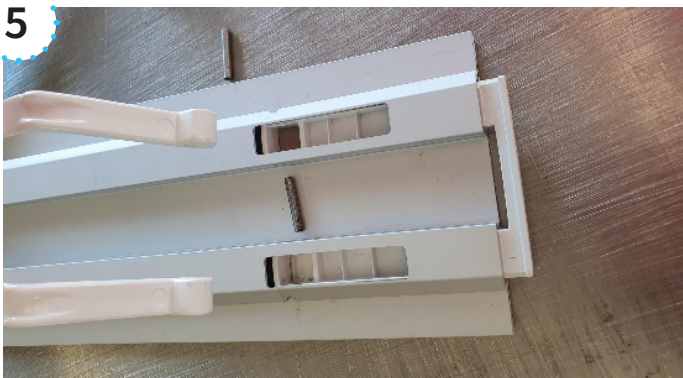
Put a small metal pin (I used an 2,5 mm Allen key) on the side of the profile, where the Slide Block is secured into place.

4



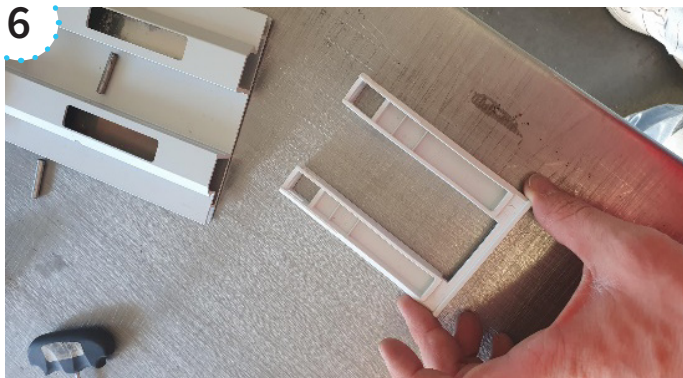
Remove the pin, called a Dowel, by using a hammer to force it out of place.

5



Remove the Bridge Handle.

6



Take out the Slide Block.

7

To reassemble the profile, reverse all the steps.